



School Profile 2015/2016





School Profile 2015/2016

See **Standards & Quality reports** at <http://www.tarbert.argyll-bute.sch.uk/documents> for full details

| | |
|------------------------------|-------------------------------|
| <u>School Name</u> | Tarbert Academy |
| <u>School Address</u> | School Road, Tarbert PA29 6TE |
| <u>Head Teacher</u> | Neil McKnight |

We have had another very rewarding but challenging year at Tarbert Academy.

We had a 'no notice' inspection of our Early Level class – I am delighted to say that we scored 'very good' in all areas (our previous inspection of Early Level a few years ago scored 'good' in all areas).

I am particularly pleased with the 'very good' ratings as we have put a lot of effort into developing our Early Level provision with the setting up of a purpose built classroom with its own toilet block, kitchen and outdoor area. This class has a Teacher and 3 Childcare and Education workers and gives our youngest pupils at 3, 4 and 5 years old the opportunity to progress to important milestones when they are ready rather than wait until they join P1. It also provides support for P1 pupils who have support needs or are not quite ready and need more time to reach a milestone.

The Early Level Team are currently carrying out a Parental Engagement project for the council and we feel that the investment of time, energy and creative thinking at this stage will pay dividends in future years.

We have had some staffing and recruitment difficulties this year with a long term absence of the P2/3/4 class teacher, 4 attempts to recruit a Chemistry/Physics teacher and some difficulty in recruiting a Biology teacher after both members of the Science department moved on last June.

Our DHT primary is covering the P2/3/4 class and the HT found himself teaching Chemistry and Biology again until we finally managed to recruit 2 science teachers.

Despite these staffing difficulties, we have continued to cover all classes and present pupils for the same wide variety of courses as usual – the Tarbert Academy Team has really pulled together to ensure that every pupil continues to be given the opportunity to achieve their full potential.

As you will see from the attainment and SLDR data below, we continue to produce high attaining young people with the skills to take them on to positive destinations post school.

Recognising Wider Achievement

Yet again this year, our pupils have shown that they can achieve great success in areas other than academic achievement

We offer many opportunities for wider achievement at Tarbert Academy

Some examples include:

- Skills development program for S4 pupils not sitting exams;
- Choice of Short courses offered as an option in S3/4;
- Argyll College courses offered to S3/4 (Skills for Work);
- Annual week of Work Experience for S4;
- Very wide range of clubs/activities;
- Pupils involved in very successful Folk Group (launched their own Album last year);
- Very strong Drama club with performances in Campbeltown, Ardrishaig and Castle Douglas last Year;
- Parent Council organised a Fashion Show which was a huge success and involved the whole school;
- Sports teams regularly achieve success – some excellent achievements considering the size of school;
- Shares4Schools group regularly achieving at the highest level nationally;
- Pupils regularly achieve success in national competitions e.g. one of our pupils travelled down to London this year when she got through to the national final of the Toyota dream car Art competition;
- Pupils achieving Gold DoE awards;
- Curriculum enhanced by many school trips and visits from external groups

SQA Performance¹

| | | | |
|----------------------------------------|----|----|----|
| School roll as at Census ^{1a} | S4 | S5 | S6 |
| 2014-2015 | 26 | 19 | 10 |

| Advanced Higher | 11/12 | 12/13 | 13/14 | 14/15 |
|------------------------------------------------------------|---------------|--------|--------|--------|
| Number of Presentations ^{1a} | 8 | | 11 | |
| Number of passes Grade A-C | 7 | | 10 | |
| % of number passes Grade A-C | 87.50% | 66.67% | 90.91% | 100% |
| % of number passes Grade A-C Authority Average | 85.20% | 79.30% | 79.00% | 84.07% |
| % of number passes Grade A-C National Average ² | 82% | 84% | 81.5% | 80.9% |
| Number of Awards Grade A-D | 8 | | 11 | |
| % Awarded Grade A-D | 100% | 100% | 100% | 100% |
| % Awarded Grade A-D – Authority Average | 91.48% | 85.86% | 89.80% | 92.92% |
| % Awarded Grade A-D – National Average | Not available | 90.3% | 88.7% | 88.6% |

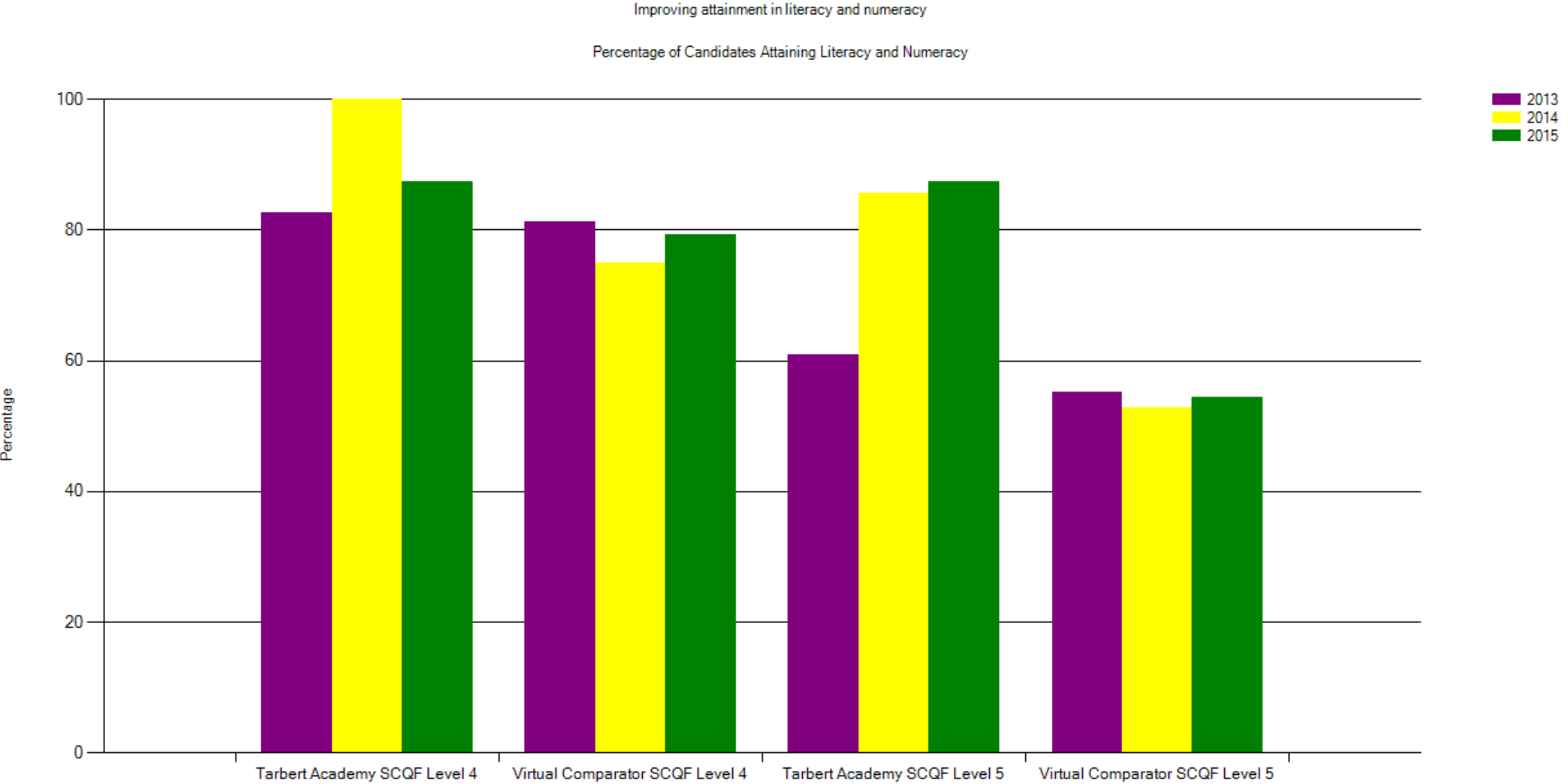
| Higher | 11/12 | 12/13 | 13/14 | 14/15 |
|---------------------------------------------------|---------------|--------|--------|--------|
| Number of Presentations ^{1a} | 51 | 71 | 44 | 65 |
| Number of Awards Grade A-C | 46 | 66 | 37 | 49 |
| % Awarded Grade A-C | 90.20% | 92.96% | 84.09% | 75.38% |
| % Awarded Grade A-C Authority Average | 76.20% | 77.60% | 76.90% | 76.98% |
| % Awarded Grade A-C National Average ² | 79% | 79% | 77.6% | 76.7% |
| Number of Awards Grade A-D | 46 | 68 | 39 | 56 |
| % Awarded Grade A-D | 90.20% | 95.77% | 88.64% | 86.15% |
| % Awarded Grade A-D – Authority Average | 86.09% | 85.88% | 85.20% | 85.61% |
| % Awarded Grade A-D – National Average | Not available | 87.3% | 85.7% | 84.8% |

SQA Performance (continued)¹

| National 5³ | 11/12 | 12/13 | 13/14 | 14/15 |
|-----------------------------------------------------|--------------------------------------------------|-------|--------|--------|
| Number of Presentations ^{1a} | No National 5 presentations across 10/11 - 12/13 | | 80 | 114 |
| Number of Awards Grade A-C | | | 70 | 85 |
| % Awarded Grade A-C | | | 87.50% | 74.56% |
| % Awarded Grade A-C Authority Average | | | 82.00% | 75.31% |
| % Awarded Grade A-C National Average ² | | | 81.30% | 79.8% |
| Number of Awards Grade A-D | | | 73 | 97 |
| % Awarded Grade A-D | | | 91.25% | 85.09% |
| % Awarded Grade A-D – Authority Average | | | 88.17% | 84.08% |
| % Awarded Grade A-D – National Average ² | | | 87.3% | 86.3% |

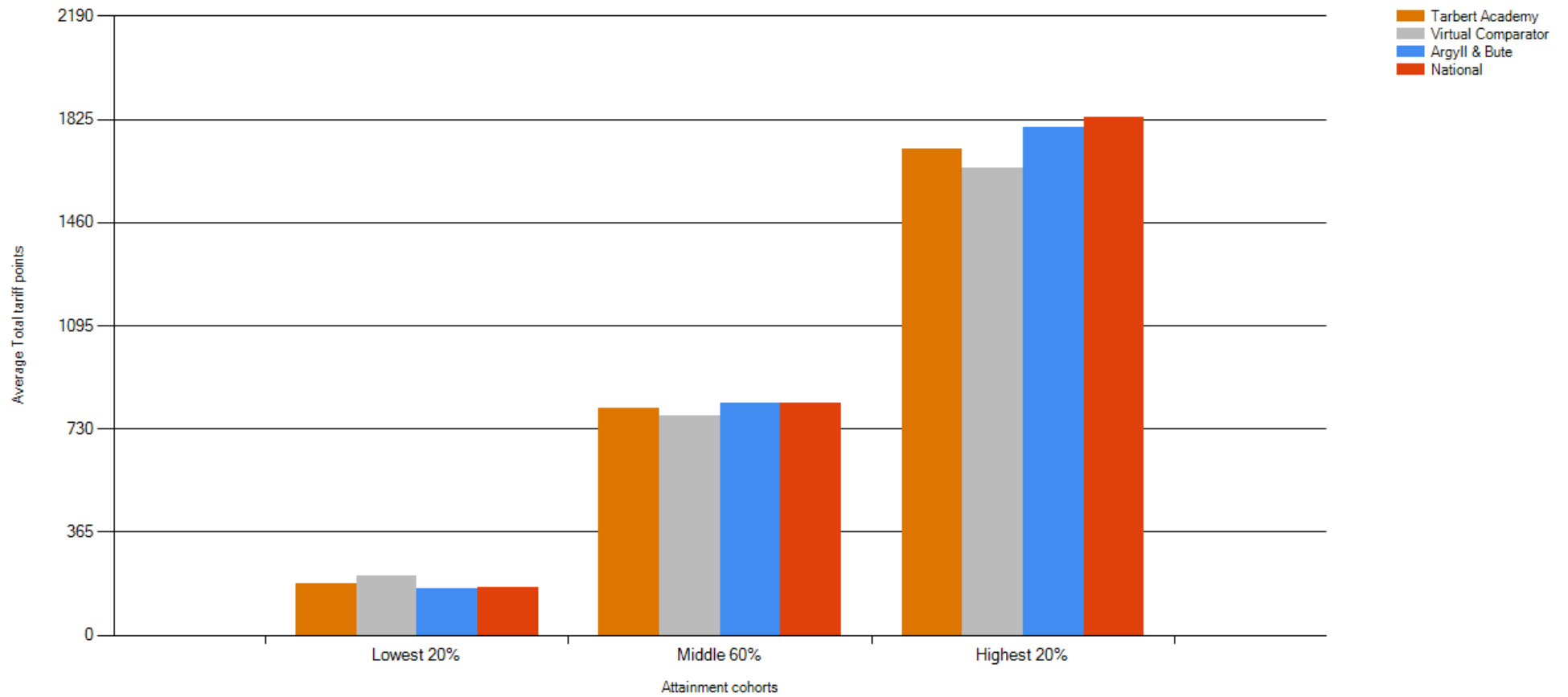
| National 4³ | 11/12 | 12/13 | 13/14 | 14/15 |
|----------------------------------------|--------------------------------------------------|-------|--------|-------|
| Number of Presentations ^{1a} | No National 4 presentations across 10/11 - 12/13 | | 72 | 93 |
| Number of Passes | | | 72 | 93 |
| % Passed | | | 100% | 100% |
| % Passed Authority Average | | | 100% | 100% |
| % Passed National Average ² | | | 93.90% | 93.3% |

Literacy and Numeracy – chart based on achievement by S6 as % of S4 year group



Improving attainment for all

Average Total Tariff Points

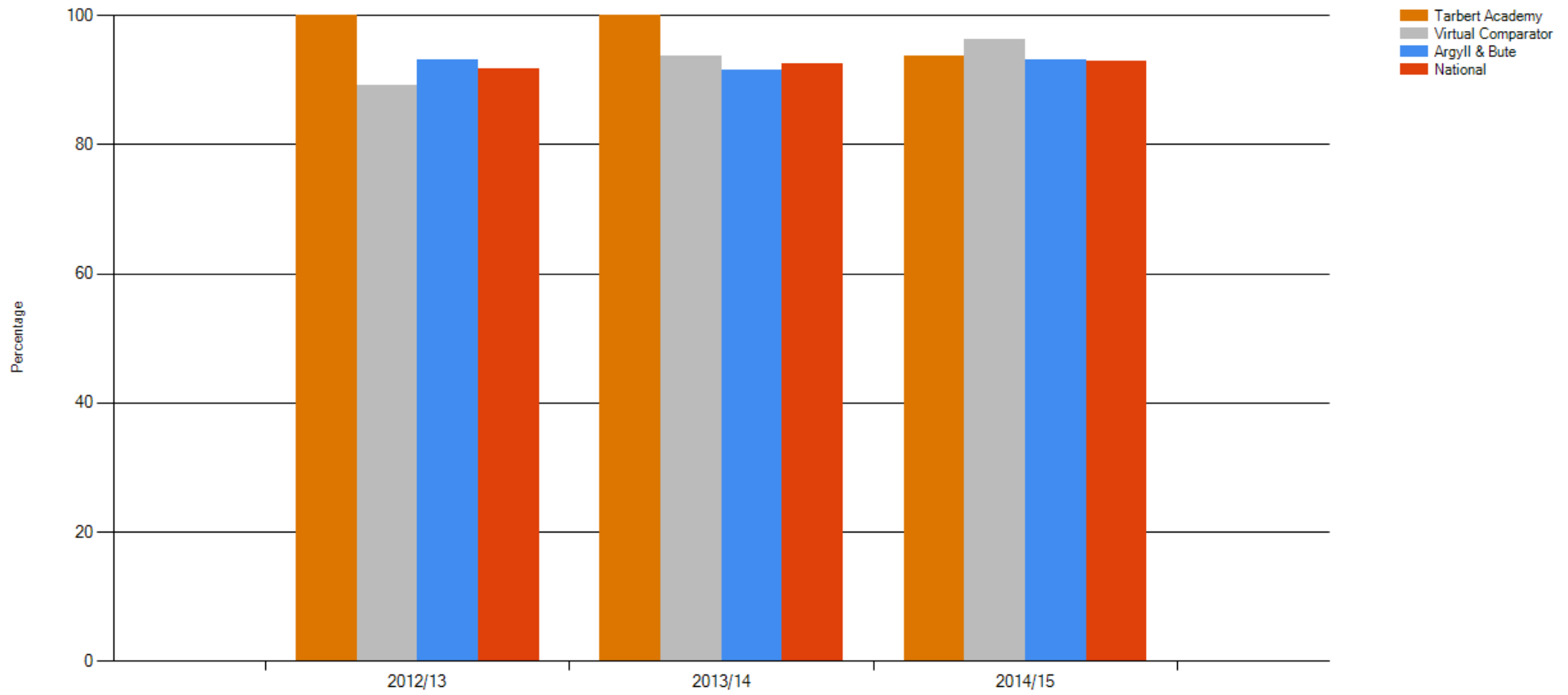


School Leaver Destination Returns (SLDR)⁴

| Measure | 11/12 | 12/13 | 13/14 | 14/15 | 15/16 |
|------------------------------------------------------------------------------|-------|--------|--------|-------|-----------------------|
| Number of Total Leavers | 22 | 11 | 19 | 16 | Data not yet collated |
| Number of Young People entering Higher Education (%) | 31.8% | 45.5% | 63.2% | 43.8% | |
| Number of Young People entering Further Education (%) | 22.7% | 18.2% | 15.8% | 18.8% | |
| Number of Young People entering Training (%) | 0.0% | 0.0% | 0.0% | | |
| Number of Young People gaining Employment (%) | 40.9% | 36.4% | 21.1% | 31.3% | |
| Number of Young People gaining Voluntary Work (%) | 0.0% | 0.0% | 0.0% | | |
| Number of Young People entering Activity Agreements (%) | 0.0% | 0.0% | 0.0% | | |
| Number of Young People - Unemployed Seeking (%) | 4.5% | 0.0% | 0.0% | 6.3% | |
| Number of Young People - Unemployed Not Seeking (%) | 0.0% | 0.0% | 0.0% | | |
| Number of Young People - Unconfirmed (%) | 0.0% | 0.0% | 0.0% | | |
| Total number of young people in a Positive Destination (%) | 95.5% | 100.0% | 100.0% | 93.8% | |
| Total number of young people in Other Destination (%) | 4.5% | 0.0% | 0.0% | 6.3% | |
| Total number of young people in a Positive Destination (%) Authority Average | 90.1% | 92.5% | 91.0% | 93.1% | |
| Total number of young people in Other Destination (%) Authority Average | 9.9% | 7.6% | 9.0% | 6.9% | |
| Total number of young people in a Positive Destination (%) National Average | 89.9% | 91.4% | 92.3% | 92.9% | |
| Total number of young people in Other Destination (%) National Average | 10.1% | 8.6% | 7.7% | 7.1% | |

Increasing post-school participation

Percentage of School Leavers in a Positive Destination



Overview

| Measure | 11/12 | 12/13 | 13/14 | 14/15 | 15/16 | % change in Roll over 5 years |
|----------------------------------------------------------------------------|---------|-------|-------|--------|------------------|-------------------------------|
| Roll (as at census) | 110 | 104 | 106 | 107 | 108 | -1.82% |
| Clothing and Footwear Grant (number of pupils) | 8 | 10 | 14 | 17 | 10 | |
| Clothing and Footwear Grant (% of number of pupils) | 7.3% | 9.6% | 13.2% | 15.9% | 9.26% | |
| Clothing and Footwear Grant (%) - Authority Average ⁵ | 7.56% | 8.51% | 9.54% | 15.60% | 11.51% | |
| Free School Meals (number of pupils) | no data | 11 | 13 | 12 | 8 | |
| Free School Meals (% of number of pupils) | no data | 10.6% | 12.3% | 11.2% | 7.41% | |
| Free School Meals (%) - Authority Average | 0.0% | 13.1% | 12.0% | 10.8% | 9.09% | |
| Free School Meal - National Average for Secondary Schools (%) ⁶ | 15.2% | 15.4% | 15.5% | 15.0% | not yet collated | |

Attendance, Absence and Exclusions⁷

| Measure | 11/12 | 12/13 | 13/14 | 14/15 | 15/16 | Range of Attendance (%) over 4 years ⁸ |
|------------------------------------------------------------------|--------------|--------|--------------|--------|--------------|---------------------------------------------------|
| Attendance: | | | | | | 2.91% |
| Attendance (% of school roll) | 94.92% | 94.29% | 93.49% | 92.01% | 92.51% | |
| Authorised Absence (% of school roll) ⁹ | 3.9% | 4.69% | 4.89% | 5.68% | 5.25% | |
| Unauthorised Absence (% of school roll) | 1.04% | 0.98% | 1.55% | 2.09% | 1.95% | |
| Attendance Number of Pupils (%) - Authority Average | 93.3% | 93.1% | 93.1% | 92.64% | 92.83% | |
| Attendance Number of Pupils (%) - National Average ¹⁰ | not collated | 93.6% | not collated | 93.7% | Not collated | |

| Measure | 11/12 | 12/13 | 13/14 | 14/15 | 15/16 |
|----------------------------------------------------------------------|--------------|-------|--------------|--------|--------------|
| Exclusions: | | | | | |
| Exclusion Openings | 54 | 17 | 32 | 86 | 36 |
| Exclusion Incidents | 13 | 4 | 9 | 20 | 8 |
| Number of Pupils | 12 | 3 | 6 | 10 | 3 |
| Exclusion Incidents per 1000 pupils | 118.18 | 38.46 | 84.91 | 181.82 | 74.07 |
| Exclusion Incidents per 1000 pupils - Authority Average | 51.45 | 51.39 | 52.46 | 39.81 | 9.99 |
| Exclusion Incidents per 1000 pupils - National Average ¹⁰ | not collated | 32.8 | not collated | 27.2 | Not collated |

Footnotes

Data will be anonymised to protect individuals where there are fewer than 5 pupils and or presentations.

SQA Please note that this data is based on current interim results. It does not take into account any updated results due to the SQA Post Result Services and therefore this data could change and is not reflective of leavers exit qualifications which are cumulative. Insight data is updated at the end of February that results post-results service outcomes.

¹ SQA Performance data was collected on 23rd November 2015 from SEEMiS Vision. Information previously provided in the SQA Authority Analysis reports for Committee will differ slightly to information provided here in order to ensure consistency of approach in collating data for comparative purposes.

^{1a} Please note that some schools operate a positive presentation policy whereby they present students, if at all possible or at parental request for higher units however this can impact both the percentage pass rate and the level of awards. Therefore care must be taken when comparing number of presentations to the percentage pass rate.

² Results up to and including 2012/13 national percentages were sourced from the Annual Statistics Report 2013 (available only as whole percentages). National percentages grades A-C for 2013/14 came from Attainment Statistics (December) 2014. National percentages for 2014/15 and grades A-D for 2013/14 came from Attainment Statistics (August) 2015. Documents produced by SQA.

³ 2013/2014 was the first year National 4 and National 5 Qualifications were offered as part of the SQA diet. Therefore no performance data is available prior to this date. 2014/2015 was the last academic year that Intermediate 1 and Intermediate 2 qualifications were offered as part of the SQA diet of examinations. They have been superseded by National 4 and National 5. Standard Grade qualifications were offered for the last time in 2012/2013 and were superseded by National 4 and National 5.

⁴ SLDR data is published by Skills Development Scotland (SDS) on behalf of The Scottish Government. The year runs from 1st August to 31st July each year and the data is collected on the 1st Monday in October each year. The data shown in this profile is the initial data collected.

- Higher Education includes HNC, HND and Degree courses
- Further Education includes Access, NPAs and Highers
- Training includes Employability Stage Funds 2 and 3 (previously called Get Ready for Work)
- Employment includes Modern Apprenticeships and any employment over 16 hours per week
- Voluntary includes Barnardos, Oxfam, Red Cross and community based volunteering
- Activity Agreements are for young people who are furthest removed from employment/training/education that are receiving mentoring support from a Trusted Professional
- Unemployment includes those young people who can't work through ill health, are caring for others or are pregnant

⁵ Clothing and Footwear Grant (CFG) is not shown as a National Average as each authority set their own criteria and therefore cannot be compared accurately. Please note that 2015/16 data for CFG and Free School Meals (FSM) is to the 16th November 2015 and therefore may change as the year progresses. Figures are based on census roll figures.

⁶ National Averages for FSM have been taken from Summary statistics for attainment, leaver destinations and healthy living, No. 5: 2015 Edition,

⁷ Attendance, Absence and Exclusion information is now collected on a biennial basis by Scottish Government and was **not** collected for 2011/2012 or 2013/2014 academic year. Data was collected in August for session 2014/15 and is therefore not yet available.

⁸ Please note that Attendance and Exclusion data can only be compared over a 4 year period as academic session 2015/16 is not yet complete and therefore the data for these years may change. The 4 year percentage change compared 4 full years. Please note that session 2014/2015 figures have been updated from last year's report to show the final figure. This information is taken from SEEMiS Vision.

⁹ Authorised absence includes bereavement, short – term exceptional domestic situations, religious observance, weddings of immediate family. Unauthorised absence includes truancy, unexplained absence and most family holidays during term time. Attendance and absence is outlined in Management Circular 3.03.

¹⁰ National Averages for Attendance and Exclusions for 2012/13 have been taken from Summary Statistics for Schools in Scotland, No.4 | 2013 Edition, 11th December, 2013 (amended 11th February 2014). For session 2014/2015 they have been taken from Summary Statistics for Schools in Scotland, No.6 | 2015 Edition, 9th December 2015.